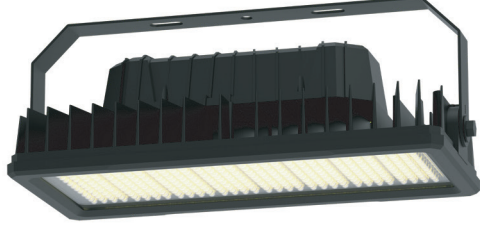
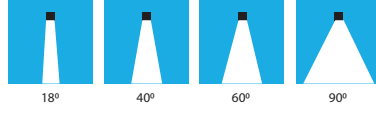


**Lina**



EN 60598-2-5



Montaj:..... Sıva Üstü  
Işık Kaynağı: ..... LED  
Opsiyonlar: ..... Acil Durum Kiti, Dali  
Işık Sıcaklığı: ..... 3000-4000-6500 K  
Optik Sistem: ..... %93 verimli PMMA Simetrik Lens  
Gövde: ..... Alüminyum Enjeksiyon  
Çalışma Ömrü: ..... 100.000 Saat / LM80

Mounting: ..... Surface Mounted  
Light Source: ..... LED  
Options: ..... Emergency Units, Dali  
Colour Temperature: ..... 3000-4000-6500 K  
Optic System: ..... PMMA Symmetric Lens  
(Optical Efficiency: %93)  
Housing: ..... Aluminium Injection  
Life Time ..... 100.000 Hours / LM80



**UYGULAMA ALANLARI / AREAS OF APPLICATION**

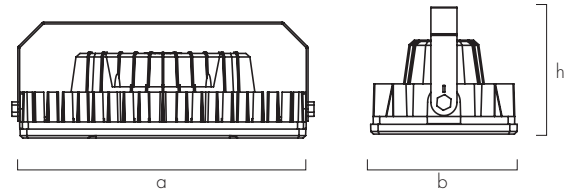


Endüstri / Industry



İmalathaneler / Workshops

a (mm)	b (mm)	h (mm)	Tavan Tipi Ceiling Type
507	224	195	Sıva Üstü / Surface Mounted



Ürün Kodu Product Code	Çıkış Lümeni Lumen Output	Güç Power Consumption	Verimlilik System Efficiency	Renksel Geriverim Color Rendering Index	Işık Sıcaklığı Color Temperature
2000-351	>26000 lm	200W	>130 lm/W	80+ (Ra)	3000K/4000K/6500K
2000-352	>31200 lm	240W	>130 lm/W	80+ (Ra)	3000K/4000K/6500K
2000-353	>41600 lm	320W	>130 lm/W	80+ (Ra)	3000K/4000K/6500K